

The Honorable Committee

position	name	home	office	fax
Grandmaster	Ted Quirk	457-9736	260-7301	264-1012
Joint Master	Patrick Coyle	457-6042	451-2255	451-2259
Joint Mistress	Eileen Cheng	733-1273	282-3166	282-5578
On Sec	Rema Paul	407-5976	230-5054	
On Cash	Don Cheang	457-5791	235-2595	
Inter Hash Sec	Charlie Chandran	010-338-8335	984-6101	985-0661
Ace Reporter	Pola Singh	718-1380	290-3746	202-2286
Religious Advisor	Chuck Pollock	244-4506		245-9470

Address: SNAIL MAIL 60-1, Jalan Maarof, Bangsar Baru, 59100 Kuala Lumpur
INTERNET fullmoon@virtual.pc.my

FULL MOON HASH GAZETTE

May 1995 Vol.3 Issue 6

<u>CONTENTS</u>	<u>PAGE</u>
OnOn at SueChan Deli!	1
What a remarkable coincidence the OnOn and the Hare have the same name!	
Things Mother Should Have Taught You	3
6 different ways to tie your hashing shoes	
Ask Dr. Lupus - What are women?	4
A new column answering Hasher questions on scientific issues	
The Educational Column - How to Read Palms	5
Something to do when they reach out their hand - other than hand them a beer!	
Comics	6
The usual crap!	

THIS RUN

Date:	Sunday, May 14, 1995	Time:	5:30 p.m.
Venue:	Taman Pertanian Bukit Ceraka, Shah Alam	Hares:	Roger Greyson & Sue Chan
Directions:	Take Federal Highway to Klang. Take 2nd exit marked 'Taman Pertanian'. At 1st roundabout exit 270 degrees (right turn). At 2nd roundabout exit 180 degrees (straight). Pass Shah Alam mosque. Turn right at TPM sign. Under TPM sign and over expressway. Turn left at Orang Asli sign. Up hill and down the other side. Park at right in the valley.		
On On	#21 Jln 11/4, Off Jalan Universiti, PJ PH: 757-9908		

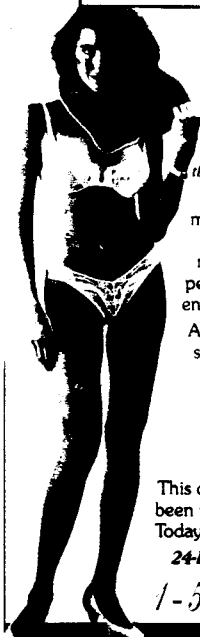
HASH PARTY INVITAT

day	mon	yr	hash	event	cost		
13	May	95	Malacca HHH	20th Anniversary	RM20		
				after 15/04/95	RM30		
3	Jun	95	Kuantan HHH	1000th - batangs only	FOC		
12	Aug	95	Sepang HHH	10th Anniversary	RM25		
				after 30/6/95 (no guar)	RM30		
8-9	Sep	95	5th Borneo Nash Hash	before 31/12/94	RM100		
				before 30/6/95	RM120		
17	Sep	95	P.J Harriettes	1000th	RM30		
6-8	Oct	95	Pan Asia 95, Kuching, Sarawak	before 31/04/95	US\$110	Robert	82 422 622
				After	US\$130		82-422-626
7-9	Jun	96	InterHash 96, Limassol, Cyprus	till 31 Sept '95	US\$150		
				1 Oct '95 to 30 Apr '95	US\$200		
				After	US\$250		
		98	InterHash 98, KL Malaysia				

Harelines - Future Runs

You Can See Your Name Here!! ➡ Just call!

Month			Day	Hares	Scribes
June	13	'95	Thursday	Geoff Plant & Uncle Freddy	Roger Greyson & Sue Chan
July	12	'95	Thursday	Michael Sweeting	Geoff Plant & Uncle Freddy
August	10	'95	Sunday	Christopher Tan	Michael Sweeting
September	8	'95	Sunday	Frankie Khoo	Christopher Tan
October	8	'95	Tuesday	Opera Chong & Joanne	Frankie Khoo
November	7	'95	Wednesday	Charlie Chandran & Pola	Opera Chong & Joanne
December	6	'95	Thursday	Christmas Run	Charlie Chandran & Pola



Panty of the Month.

Because lingerie is the gift that touches her when you can't see.

Enroll for 3, 6 or 12 months and she will receive one designer panty each month on her doorstep—perfumed, gift-wrapped, and enclosed with a personal note.

April's edition arrives with a stuffed bunny rabbit and a special note reading:

"This gift is sent in good humor and cheer
In case you wanna little tail this time a year."

This delightful gift of romance has been profiled by CNN, MTV, USA Today and the Wall Street Journal.

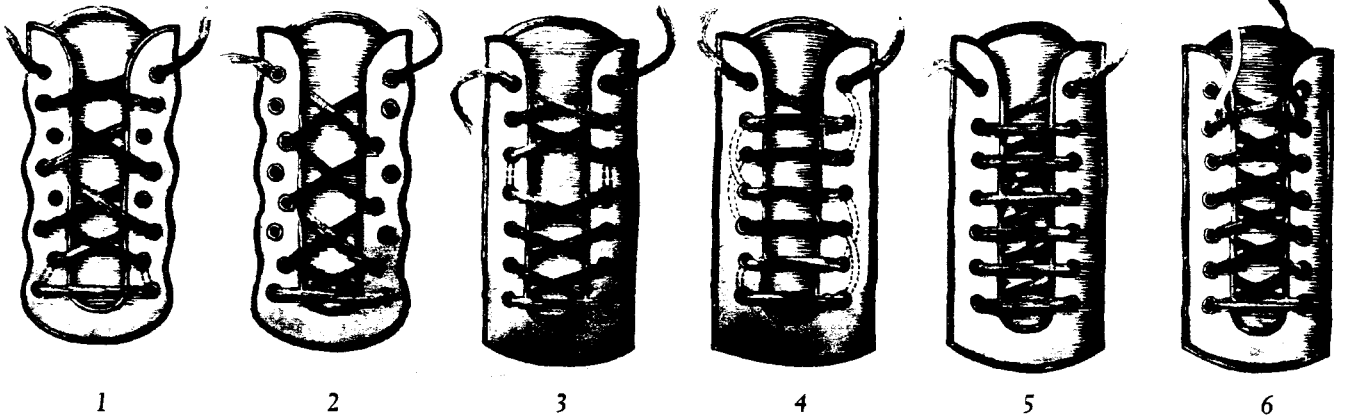
24-hr. information hotline

1-515-469-6800



"I told you that you are the only man for me."

Hashing 101 : How To Tie Your Shoes



Tied Game

Remember when Pop taught you how to tie your sneakers? You thought you had mastered a skill that would take you through life. Sorry. There's more than one way to tie an athletic shoe. "Manufacturers actually design shoes with variable eyelets so you can fine-tune the fit. Problem is, nobody does it," says orthopedic surgeon Carol Frey, M.D., of Long Beach Memorial Hospital. If you have a high arch or narrow heel, the common crisscross pattern we all learned as toddlers may feel too tight on top or wobbly in the back. Discomfort, blisters, even rollovers can result. Dr. Frey says the following lacing variations adjust for the most common athletic foot problems.

1. Narrow foot. Use the eyelets that are set wider apart on many running and cross-training shoes. This brings up the sides of the shoe more tightly across the top of a narrow foot.

2. Wide foot. Lace using the eyelets found closer to the tongue of the shoe to provide more width to the lacing area. It's like letting out a notch on your belt.

3. Foot pain. If you have a bump on the top of your foot or pain from a tendon injury, leave a space in the lacing to alleviate pressure. Simply skip the eyelets at the point of the pain and lace through the next set of eyelets.

4. High arches. Lace your shoes so the laces travel in a straight line from eyelet to eyelet. Start by lacing the bottom two eyelets.

Then take the left lace, skip an eyelet and poke it up through the next eyelet on the left side of the shoe. (Dotted lines in the illustration show where the lace is hidden from view.) Next, bring the lace across the tongue and poke it through the opposite eyelet. Now take the right lace, poke it up through the eyelet directly above, bring that lace across the tongue and push it through the opposite eyelet. Repeat. By avoiding the crisscross effect, you eliminate the pressure points on the tongue of the shoe that cause pain on the top of your foot.

5. Ingrown toenails or corns. This lacing pattern suspends the laces and lifts the fabric away from injured toes. Start by poking the shoelace through one of

the top eyelets; leave enough threaded through to tie the shoe off when you're finished. Next, thread the longer section of lace through the opposite bottom eyelet. Then lace across, then diagonally up, then across again, and so on, always lacing over the section of lace running from the top of the shoe to the bottom.

6. Slipping Heel. To keep your heel from sliding and avoid blisters, you need to snug the top of the shoe. To do it, lace normally until you reach the second-to-last eyelets at the top. Instead of crisscrossing, poke the laces up through each eyelet and down through the eyelet above it. Next, thread the lace across and under the loop you formed with the opposite lace, then tie the shoe.



"This dress is so sexy it comes with a condom."

Dear Dr. Lupus,

I just don't understand women. I've read everything I could find about them - Cosmopolitan, all the self-help books, and the advice columns in Playboy, but I just don't just don't understand women - can you help?

Signed

Confused in Mother Hash

Dear Confused,

Your problem is obvious! You are reading the wrong books! You need to take the scientific approach. Start by reading all the reference books, to help you, I have photocopied page 1176 of The URC Handbook of Chemistry & Physics.

ON ON

Dr. Lupus

Hazardous Materials Data Sheet

Analysis

Element : Women

Symbol : WO2

Discoverer : Adam

Atomic Mass : Accepted as 55kg but known to vary from 45kg to 225kg

Occurrence : Found in large quantities in urban areas with trace elements in outlying regions

Physical properties:

- 1 Surface normally covered in powder and paint film
- 2 Boils at absolute nothing, freezes for no apparent reason.
- 3 Melts if given special treatment
- 4 Bitter if used incorrectly
- 5 Found in various grades ranging from virgin to common ore.

Chemical properties:

- 1 Affinity to gold, silver, platinum and all precious stones.
- 2 Absorbs great quantities of expensive substances.
- 3 Explodes without reason or warning.
- 4 Greatly increased activity when saturated with alcohol.
- 5 The most powerful money reducing agent known to man.

Common Uses:

- 1 Highly ornamental especially in sports cars.
- 2 Can be a great aid to relaxation

Tests:

- 1 Pure specimens turn bright pink when found in natural state.
- 2 Turns green when placed alongside superior specimen



WHAT'S YOUR LINE?

Like fingerprints, all palms are unique. Even your right palm is different from your left palm. Supposedly, the left hand reveals the characteristics you are born with, and the right how you put these traits to use. (For left-handers, this rule is reversed.)

THUMB

Large phalange of Will:
Person of action.
Large phalange of Reason:
Philosopher.
Thumbs that can be bent back toward forearm: Easygoing.
Stiff thumbs:
Set in one's ways.

FINGERS

Large gaps between fingers:
Extravagant, unable to save.
Long fingers (almost as long as palm itself): Gregarious.
Very long fingers:
Idealistic.
Short fingers:
Lusty sex drive.

MAJOR LINES OF THE PALM

The headiest lines are straight and strong, reflecting emotional stamina and mental clarity. Wiggly lines reflect wishy-washy traits. The clearer the line, the more important the information it carries.

LIFE LINE

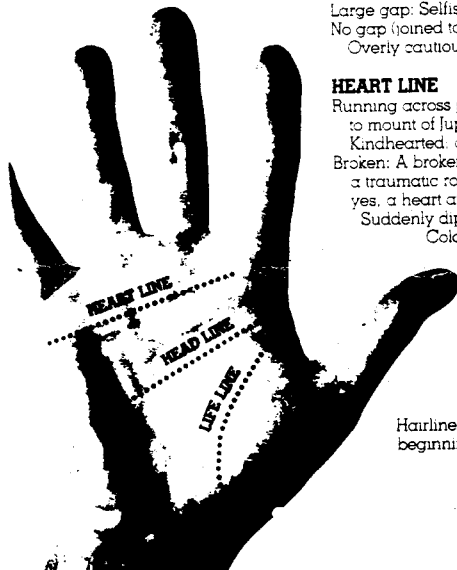
Short and complex:
Delicacy of health.
Broken: Subject to a life-threatening event.
Branches pointing toward the fingers: Fame, acclaim.
Double (or parallel) life lines:
A second chance after illness or disaster.

HEAD LINE

Straight (or slightly sloped), strong, and long: Brainsy.
Slight incline toward wrist:
Astute business sense.
Sudden tilt toward wrist:
Artistic ability.
Long, with lots of slope:
Idealistic, too imaginative.
Tiny gap between head and life lines at origins (between thumb and index finger):
Self-contained self-starter.
Large gap: Selfish.
No gap (joined together):
Overly cautious underachiever.

HEART LINE

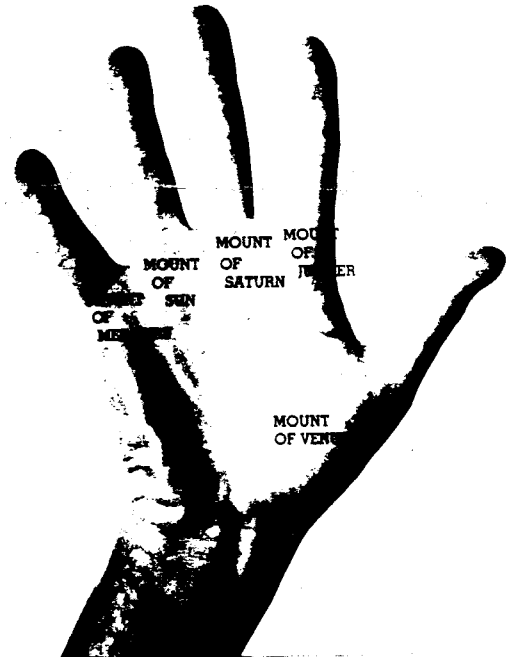
Running across palm, then up to mount of Jupiter:
Kindhearted, a good lover.
Broken: A broken heart — a traumatic romance or, yes, a heart attack.
Suddenly dipping downward:
Cold, moody, distant.
Fine lines and branches near mount of Saturn, pointing toward wrist:
Failures in love.
Fine lines pointing upward:
Success in love.
Hairlines and branches at beginning (edge of palm):
Different affairs.



MOUNTS

Mounds are raised "mounds" on the palm. They are most significant when they are visually and tactually prominent.

Venus: Warm, sympathetic, lusty.
Jupiter: Ambitious, arrogant.
Saturn: Well-balanced.
Sun: Happy, successful.
Mercury: Good business sense.



MINOR LINES OF THE PALM

LINE OF DESTINY

Long (reaching up to mount of Saturn): Workaholic.
Short (beginning halfway up palm): Unsettled, very directionless.
Stopping at head line:
Reluctant to take risks.
Stopping at heart line:
Relationship (like marriage) stands in way of other achievements.
Missing entirely from palm:
Lack of purpose.

SUN LINE

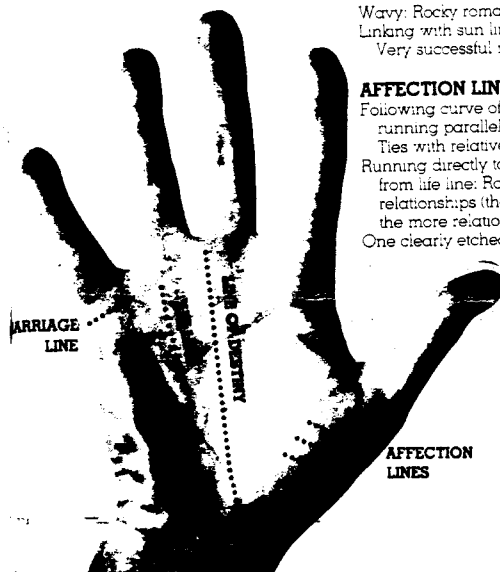
Long and solid: Riches, wishes come true.
Parallel by lines running to mount of Mercury:
Financial success.
Parallel lines clustered under mount of Sun: Dilettante, too many goals.
Running from beneath mount of Mercury to ring finger:
Success through partnership.

MARRIAGE LINE

One line: One marriage.
Two lines: Two marriages.
Near heart line: Early marriage.
Wavy: Rocky romance, uncertainty.
Linking with sun line:
Very successful marriage.

AFFECTION LINES

Following curve of thumb and running parallel to life line:
Ties with relatives.
Running directly to thumb from life line: Romantic relationships (the more lines, the more relationships).
One clearly etched line:
An affair in progress.



Comics



when i die, i want to go like my grandfather in his sleep - not screaming, like the passengers on his plane.



Subject: Increased Tax Payments

To: All male taxpayers
From: Internal Revenue Service
Subj: Increases Tax Payments

Dear Taxpayer:

The only thing the IRS has not taxed is your Pecker.

This is due to the fact that 40% of the time it is hanging around unemployed, 30% of the time it's pissed off, 20% of the time it is hard up, and 10% of the time it is employed, but operates in the hole. Furthermore, it has two dependents, and they are both nuts.

Therefore, after May 1, 1995 your pecker will be taxed; based on its size, using the "Pecker Checker Scale" below. Determine your category and insert the additional tax under "Other taxes", page 2, part V, line 61 of the Standard Tax Return.

*****Pecker Checker Scale*****

10-12 inches	Luxury tax.....	\$50.00
8-10 inches	Pole tax.....	\$25.00
6-8 inches	Average tax.....	\$15.00
4-6 inches	Nuisance tax.....	\$5.00

Note: Anyone under four (4) inches is eligible for a refund.

Males with peckers in excess of 12 inches should files under "Capital Gains". If unsure of your correct category, call our office and we will send you a Peter Meter Reader.

DIRECTOR, TAXATION DEPARTMENT



The Japanese have just improved upon bungee jumping.

It is now cordless.



A nun is walking down the street late at night. A man grabs her, throws her to the ground and tells her, "I'm going to rape you, because I'm still a virgin at 45." The nun stunned by the candid statement by the would be rapist says, "Please sir put it in my bottom side so that I may remain a virgin in the Lord's eyes." The rapist fully obliges and finishes his deed.

Feeling a bit remorseful for his act the man says, "Sister I cannot tell a lie, I am not a virgin. I'm a sex-crazed rapist." The nun not to be outdone says, "I sir cannot tell a lie either. I am no virgin." The rapist smirks and nun continues, "My name is Steve and I'm going home after a costume party."



THE PRIDE IS BACK, AMERICA!

Handwritten signature